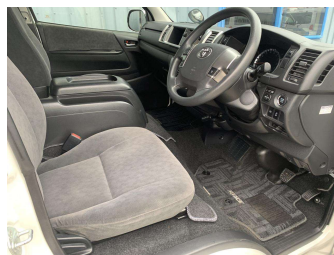


# 2018 Toyota HIACE GL 10 Seater



**Purchase Price** **\$41,990**  
Includes GST  
Excludes on-road costs of \$360

Finance may be available on this vehicle. Ask one of our friendly staff for more information.

Gain peace of mind with Mechanical Breakdown Insurance. **Ask us how.**



an ASSURANT company

- Top features**
- » 10 Diagonal Seat Belts
  - » ABS Brakes
  - » Auto Headlights
  - » CD/Stereo
  - » Chain Driven
  - » Climate Control Air Co...
  - » Dual Air Bags
  - » Electric Mirrors
  - » Electronic Stability C...
  - » Fog Lights
  - » Forward Collision Warn...
  - » Immobiliser
  - » Intel Key
  - » Lane Departure Warning
  - » Rear Wiper
  - » Remote Central Locking
  - » Reverse Camera
  - » Tints

**Body Style**  
4 door, Van

**Odometer**  
93,000 km

**Engine**  
2700 cc, Internal Combustion

**Fuel Type**  
Petrol


**Transmission**  
Auto, Rear Wheel

**Wheels**  
-

**VIN**  
7AT0H60FX24053935

**Interior**  
-

**Safety**



Based on 2023 UCSR rating for 05-19 models

**Reg No.**  
-

**Ext Colour**  
Pearl

**History**  
Ex-Overseas

**Seats**  
10 seats

**CO2 Emissions**  
★ ★ ☆ ☆ ☆ ☆  
256 grams/km

**Energy Economy**  
★ ☆ ☆ ☆ ☆ ☆  
Annual fuel cost of \$4,310  
11L per 100km

Cost per year is an estimate based on petrol price of \$2.80 per litre and an average distance of 14000 km. Emissions and Energy Economy figures standardised to 3P WLTP.

**Stock ID: 29693**



Craig McLeods Wholesale Cars | Phone 07 850 8168 | Email [craig@cmcars.co.nz](mailto:craig@cmcars.co.nz)  
552 Te Rapa Road, Hamilton 3200, New Zealand  
[www.cmcars.co.nz](http://www.cmcars.co.nz)

