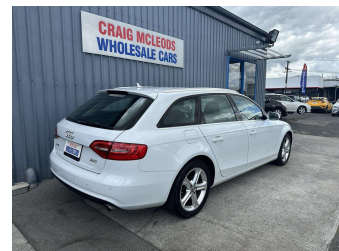
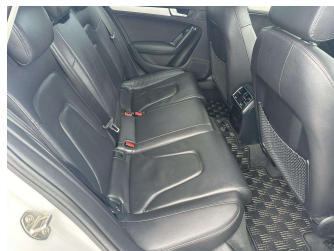


# 2013 Audi A4 Avant 2.0TFSI



**Purchase Price** **\$17,990**

Includes GST  
Excludes on-road costs of \$360

Finance may be available on this vehicle. Ask one of our friendly staff for more information.

Gain peace of mind with Mechanical Breakdown Insurance. **Ask us how.**



an ASSURANT company

- Top features**
- » 3 Diagonal Rear Belts
  - » 8 SRS Airbags
  - » ABS Brakes
  - » Bluetooth
  - » CD/Stereo
  - » Dual Climate Air Condi...
  - » Electric Front Seats
  - » Electric Mirrors
  - » Electronic Power Contr...
  - » Fog Lights Front And R...
  - » Head Light Washers
  - » Heated Front Seats
  - » Intel Key
  - » ISO FIX
  - » Parking Sonar Front An...
  - » Rear Wiper
  - » Remote Central Locking
  - » Reverse Camera

**Body Style**  
5 door, Station Wagon

**Odometer**  
50,814 km

**Engine**  
2000 cc, Internal Combustion

**Fuel Type**  
Petrol


**Transmission**  
Auto, Front Wheel

**Wheels**  
-

**VIN**  
WAUZZZ8K2DA238226

**Interior**  
-

**Safety**



Based on 2023 UCSR rating for 08-15 models

**Reg No.**  
-

**Ext Colour**  
Pearl

**History**  
Ex-Overseas

**Seats**  
5 seats

**CO2 Emissions**  
★★★★☆  
188 grams/km

**Energy Economy**  
★★★★☆☆  
Annual fuel cost of \$3,140  
8L per 100km

Cost per year is an estimate based on petrol price of \$2.80 per litre and an average distance of 14000 km. Emissions and Energy Economy figures standardised to 3P WLTP.

**Stock ID: 29893**



Craig McLeods Wholesale Cars | Phone 07 850 8168 | Email [craig@cmcars.co.nz](mailto:craig@cmcars.co.nz)  
552 Te Rapa Road, Hamilton 3200, New Zealand  
[www.cmcars.co.nz](http://www.cmcars.co.nz)

